

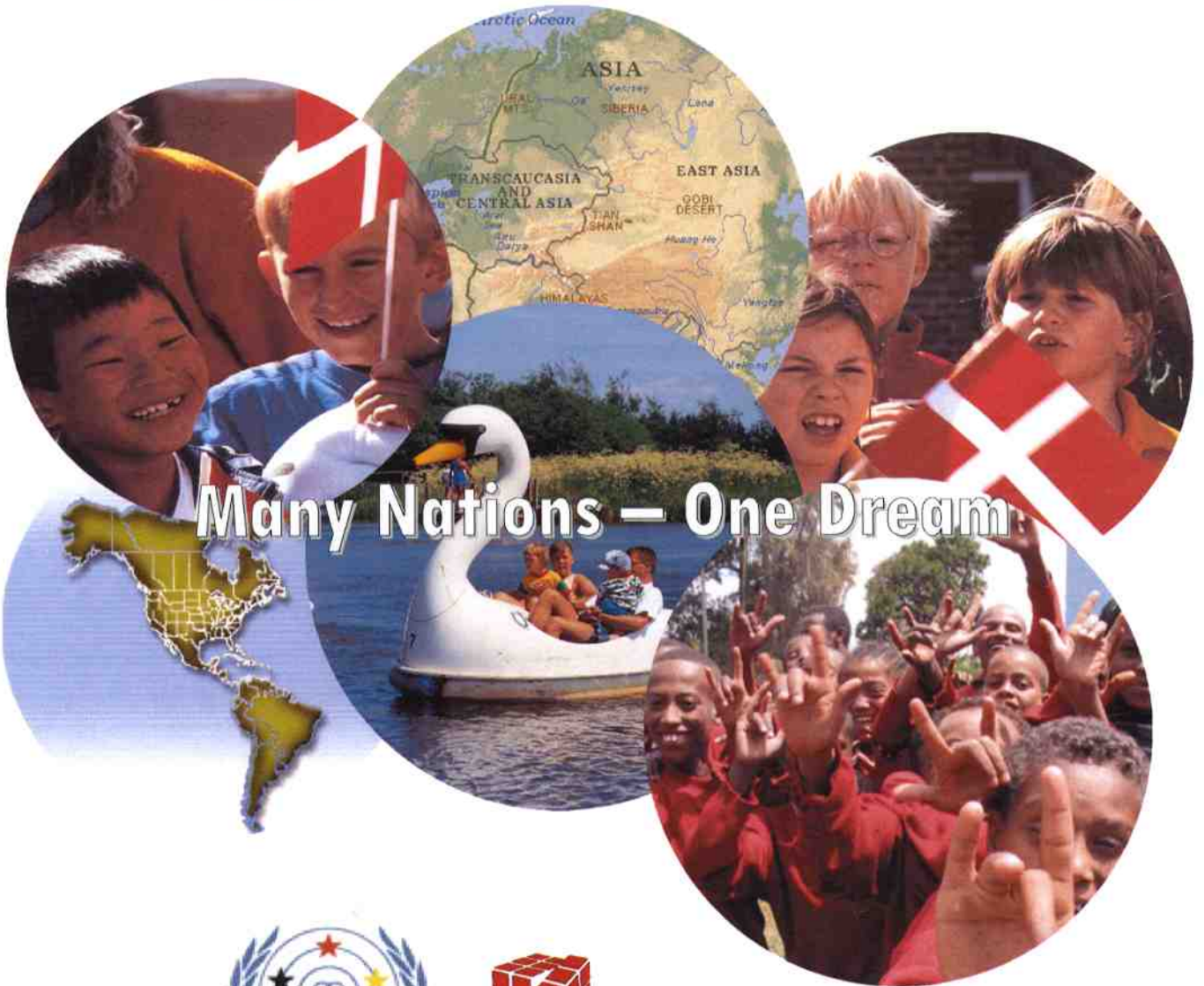
The World Federation of the Deaf and Danish Deaf Youth Association invite you to:

THE FIRST WFD CAMP FOR DEAF CHILDREN

CASTBERGGÅRD, DENMARK



Logo design: Hanna Orlov



DANSKE DØVES UNGDOMSFORBUND



Second Announcement – October 2005

CONTENTS:

- 2. Index**
- 3. Introduction**
- 4. Welcome from the Danish Deaf Youth Association**
- 5. Hello from Danish Organizing Committee**
- 6. Greetings from WFDYS**
- 7. Location of the camp venue**
- 8. Travel information**
- 10. Payment**
- 11. Contact information**
- 12. Programme**
- 13. Facts about Denmark**

Previous information, sent May 2005 to all WFD Ordinary Members:

First Announcement, May 2005

- General information about the World Federation of the Deaf Camp for Deaf Children 2006 (WFDCC 2006) inclusive date and venue
- Theme and logo
- Participants
- Information about visa and vaccination
- Information about price and donations for developing country participants
- Tentative program
- Names of the Danish Deaf Youth Organization (DDU)
- Names of the Camp Organizing Committee (COC)
- Names of the World Federation of the Deaf Youth Section board (WFDYS)
- Contact information

Future information to those who have enrolled the camp:

Third Announcement, May 2006

- Names and countries of participants and leaders
- What to bring
- Travel information



THE WORLD FEDERATION OF THE DEAF

in collaboration with



DANSKE DØVES UNGDOMSFORBUND

THE DANISH DEAF YOUTH ASSOCIATION

The World Federation of the Deaf (WFD) and the Danish Deaf Youth Association are pleased to invite the Deaf children of your country to the very first World Camp for Deaf Children in Denmark from Saturday July 29th to Saturday August 5th 2006. We will provide information on how to join the camp, general conditions, and participation fees in this booklet. We are proud to be able to organize the camp in collaboration with the WFD Youth Section, WFDYS. We are sure that the camp will be a unique opportunity for the Deaf Children of the world to meet and share their culture, experience and their lives as Deaf citizens of the world. **Many Nations – One Dream** is the theme of the camp.



DANSKE DØVES UNGDOMSFORBUND

Welcome Deaf Children of the World, their parents and the Deaf Organisations!

Danish Deaf Youth Association welcomes you to the First WFD Camp for Children. We are very pleased having the responsibility arranging the very first WFD Camp for Children. We live in a world, where globalisation is one of the keywords.

During the camp the Deaf children will experience opportunities they have never met before, such as learning the interaction between different nations, culture, thus the children will widen their view on the world and its human beings. The children will also experience communicating with their peers in International Sign, and break down the territorial borders. When the borders disappear, and the children share their dreams, the children will fulfill the theme of the camp, "Many Nations - One Dream".

The WFD Camp for Deaf Children will be an unforgettable experience for the children. A wonderful week full of experiences and socialising in the pretty and children friendly country Denmark.

On behalf of the Board of the Danish Deaf Youth Association:

Welcome to the First WFD Camp for Deaf Children in Denmark!

Yours sincerely,

Ms. Helena Jouhki

President of Danish Deaf Youth Association



The Danish Deaf Youth Association Board 2004-2006:

*Back row: Ms. Heidi Nissen, Mr. Thomas Philip and Ms. Camilla Bartholin Fisker
Front row: Ms. Mette Bertelsen and Ms. President Helena Jouhki*



Hello from Danish Organizing Committee (DOC)



*Back row: Mr. Lars Knudsen, Ms. Alda Padeiro and Mr. Thomas Philip
Front row: Ms. Anne Hvid Karsten and Ms. Heidi Nissen*

Hello Deaf Children all over the world!

We are very excited about planning the very first WFD camp for the Deaf children world wide. We do our best to make sure that everyone will have a pleasant and unforgettable camp in Denmark. We will try to offer a varied programme during the camp, attractive to children of 10 - 12 years. The leaders will also have a unique opportunity to meet other leaders and share their experiences in workshops and much more.

Best wishes on behalf of the Danish Organising Committee:

Ms. Anne Hvid Karsten
Camp Coordinator



Greetings from World Federation of the Deaf Youth Section

World Federation of the Deaf Youth Section (WFDYS) is happy to welcome you all to the first WFD Camp for Deaf Children in Denmark, the summer of 2006!

Our dream is to realize a Camp for the Deaf children, and now it seems to be a reality soon! WOW!

It is very important for all of you Deaf children of the world to meet each other and do networking with friends on your own age. The aim of the Camp is to participate in a great cultural exchange and to learn more about Human Rights for Deaf people. You will have lot of fun, and a great time with laughter! Our wish is that you some day will become a great role model for other children and youth in the world.

On behalf of WFDYS, I really hope that your home Deaf Association will support your participation in this first WFD Camp for Deaf Children ever!

Ms. Alda Padeiro

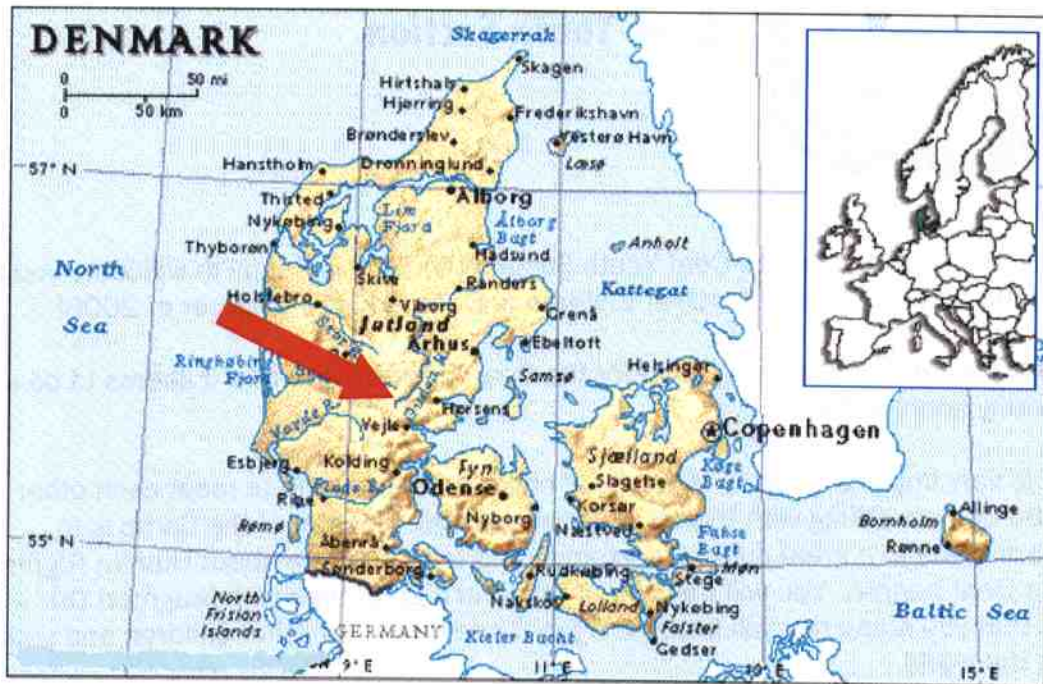
WFDYS Board Member



The WFDYS Board 2003-2007:

From left: Mr. Patrick Lazure, Canada; Ms. Therese Rollvén, Sweden; Ms. Alda Padeiro, Portugal; Mr. Juan Ángel de Gouveia, Venezuela; Ms. Victoria Skorikova, New Zealand; Ms. Juliette Dalle, France and Ms. President Vivien Batory, Denmark.

Location of the camp venue



The camp venue is placed in Jutland (in Danish: Jylland) near the city **Vejle**. The name of the camp venue is *Castberggård* and it is the only Folk High school for the Deaf in Denmark. *Castberggård* has many facilities and it is possible to make many indoor as well as outdoor activities.



Castberggård Folk High School of the Deaf

www.castberggaard.dk



Travel information

There are many ways of getting to Denmark; by air, rail, bus, ferry, and car.



If you plan to get here by air, then please make your ticket to BILLUND AIRPORT, Denmark. (BLL) Billund Airport is situated 50 km from Castberggård. We will provide transportation from Billund Airport to Castberggård. You can also choose flying to Copenhagen Airport, CPH.

There are direct rail link from Copenhagen Airport to Vejle provided by DSB, the national rail service if you should arrive in Copenhagen Airport. Please inform us if you want guide service from Copenhagen to Castberggård.



If you plan to get here by rail or by bus then please make your ticket to **Vejle rail station**, Denmark. Vejle is situated about 20 km from Castberggård. We will provide free transportation from Vejle to Castberggård.



Your travel information must be stated on the schedule, to be found on the last pages, and send to us, as soon you know your arrival and departure times but at least one month before the camp.

All travel expenses are at your own.

Alcohol and drug policy

Neither alcohol nor drugs are allowed during the camp days - Neither by the participants nor by the leaders. If we notice any use of such things, you will be asked to leave the camp.



Medical needs

If you have any medical needs then please state it on the registration form. In order to ensure your prescriptive medicine or syringes can be brought to Denmark a prescription from your doctor must be brought along with you, to be shown to the customs prior to arrival.

Insurance

Personal travel insurance must be prepared before entering Denmark. If something should happen to you during you stay, we will assist you and your leader as best as possible. If you need to change your return ticket due to illness your travel insurance should cover this.



Specific prices for developing and developed countries

The WFDYS guidelines require that the prices are a bit lower for the developing countries than for the developed ones. We are using the United Nations definitions on developing countries.

Please check www.un.org if you are not sure about your country.

The camp fees:	250 euro for developing countries
	350 euro for developed countries

The camp fee includes accommodation, lodging and activities for the whole week. As mentioned before, all travel expenses are on your own.

Payment

You can pay by bank transfer to our bank account or pay online by using PayPal.com.



Payment by PayPal.com by credit card or bank transfer

If you would like to pay using PayPal.com – please send a e-mail to anne@ddu.nu and we will send a invoice.



Payment by bank transfer:

Bank: Nordea Bank Danmark A/S
Address: Erhvervsafdeling Copenhagen
Vesterbrogade 8, Boks 850
DK-0900 Copenhagen
SWIFT Code: NDEADKKK
IBAN Code: DK442000 8127 298 441

Camp registration forms

Before filling out the enrolment papers you should make contact with your Deaf Association to show your interest. The enrolment papers must be signed by one of your parents or guardians, and by your Deaf Association. A copy of your passport or EU Identity Card must be attached the registration forms. Do not forget to attach two passport size photos! The registration forms are attached to this booklet.



Deadlines

	Developing countries	Developed countries
Registration forms	March 1 st 2006	April 1 st 2006
50% of the camp payment	March 1 st 2006 175 €	April 1 st 2006 125 €
Last 50% of the camp payment	April 1 st 2006 175 €	May 1 st 2006 125 €
Travel information	June 15 th 2006	June 15 th 2006

You can also choose to pay the full amount **1st March 2006**

Contact information

Camp coordinator Ms. Anne Hvid



E-mail: anne@ddu.nu

Address: Danish Deaf Youth Association
Snaregade 12, 1.
DK-1205 Copenhagen
www: www.ddu.nu/wfdcc2006

Tentative Programme

DAY'S THEME	Day 1	Day 2	Day 3	Day 4	Day 5	Day 6	Day 7	Day 8		
	<i>Welcome</i>	<i>Getting together</i>	<i>The Nature</i>	<i>The Deaf History Creative Day</i>	<i>Danish History and Culture</i>			<i>Farewell</i>		
	Saturday July 29 th	Sunday July 30 th	Monday July 31 st	Tuesday August 1 st	Wednesday August 2 nd	Thursday August 3 rd	Friday August 4 th	Saturday August 5 th		
7h30 - 8h30	Arrivals to Billund Airport or Vejle rail station Transfer from airport or rail station to camp venue Registration Lodging	B R E A K F A S T							Departing to Billund Airport or Vejle rail station	
8h30 - 10h30		Group photo	All day tour Boat trip at the Lake of Silkeborg	Workshops Deaf history by WFDYS	Departure to Århus	To be confirmed	Half day tour Legoland Beach/forest			
10h30		Guiding around the camp venue	S N A C K							
10h30 - 12h00		Practical information	Hiking at Himmelbjerget	Deaf history by WFDYS	Sightseeing in Århus, den Gamle By	To be confirmed	Legoland Beach/forest			
12h00 - 13h00		L U N C H								
13h00 - 14h00		Opening ceremony	Excursion to the coast	Activities Games	Sightseeing in Århus	To be confirmed	Legoland Beach/forest			
14h30		S N A C K								
		Free time & Information to leaders	Get together activities	Excursion	Face painting and creative workshops	Museums and Deaf Club	To be confirmed	Free time Closing ceremony		
17h30 - 18h30		D I N N E R								
		Information to participants	Free time	Free time	Bonfire	Returning to Castberggård	Free time	Farewell party		
	Ice breaking activities	Good night show	Children's Stand Up Comedy	Entertainment	Entertainment	Good night show				
22h30	B E D T I M E									

Good facts about Denmark

Climate

Denmark has a mild climate with no extremes of heat or cold. In the bright summer months of June to August, the average daytime temperature is 19.5 degrees centigrade.

Population

Approximately 5.3 million people live in Denmark, making it the most densely populated nation in Northern Europe.

Size and location

Situated in Northern Europe between the North Sea and the Baltic, Denmark is the only Scandinavian country connected to the mainland Europe. (The southern border of the Jutland Peninsula meets with Germany.) All in all, Denmark consists of about 405 islands, many of which are uninhabited. The capital, Copenhagen is situated on Zealand, the largest island. The entire country is 43,000 square kilometres/16,630 square miles in area, not including Greenland and the Faroe Islands. By area, it's the smallest nation in Northern Europe.

Time zones

Denmark is 1 hour ahead of GMT. From the last Sunday in March to the last Sunday in October, Denmark has summer time, which means putting the clocks one hour forward.

Government

Denmark is a constitutional monarchy, with Queen Margrethe II as the head of state. A popularly elected parliament, Folketinget, governs the country and the prime minister, the nation's chief political officer, usually comes from the ranks of the majority party. The Faroe Islands and Greenland come under nominal rule from Denmark.

What to Wear

The four seasons are distinct in Denmark, so dress accordingly. An overcoat and warm clothing are needed for late autumn, winter and early spring. Lighter apparel is fine for the rest of the year.

Vaccinations, health certificates etc.

At present, no vaccinations, health certificates or the like are required when entering Denmark from another country.

Passport and visa

For a stay of up to three months, travelers only require a valid passport. An entry or transit visa is required by some nationalities. Consult the Danish embassy or consulate in your home country for further information.

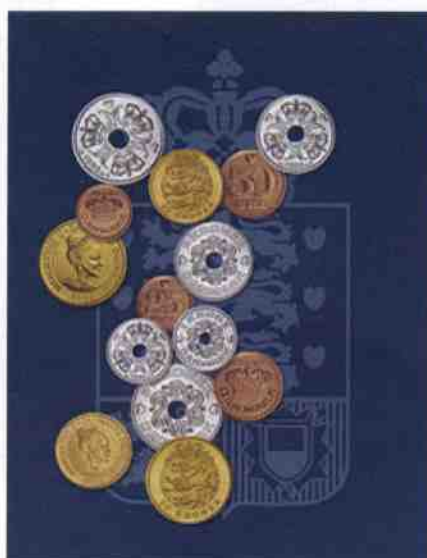
Electric Current

220 volts AC (50 Hz) is the Danish standard. Plugs may differ from those in your home country, so you should bring a two-pin continental adapter with you.



What is the currency in Denmark?

The monetary unit is the Danish Krone (DKK), which is divided into 100 øre. Bank notes are found in denominations of DKK 50, 100, 200, 500 and 1000. Coins are found in DKK 20, 10, 5, 2, 1 and 50-øre and 25-øre values. We recommend bringing **Euro** or **US-Dollars** to exchange in Denmark.



TRAVEL DISTANCES TO COPENHAGEN BY AIR:

London:

Flight duration 2 hours 5 minutes.

From Copenhagen to London: 953 kilometers.

Berlin:

1 h. 10 min.

From Copenhagen to Berlin: 361 km.

Paris:

1 h. 55 min.

From Copenhagen to Paris: 1,028 km.

Madrid:

3 h. 20 min.

From Copenhagen to Madrid: 2,071 km.

Stockholm:

1 h. 10 min.

From Copenhagen to Stockholm: 526 km.

Oslo:

1 h. 15 min.

From Copenhagen to Oslo: 481 km.

New York:

8 h. 45 min.

From Copenhagen to New York: 6,197 km.

Los Angeles:

approx. 14 h. 30 min.

From Copenhagen to Los Angeles: 9,017 km.

Sydney:

20 h. 55 min.

From Copenhagen to Sydney: 16,047 km

Rio de Janeiro:

approx. 19 h.

From Copenhagen to Rio: 10,101 km

Tokyo:

10 h. 50 min.

From Copenhagen to Tokyo: 8,716 km.

Beijing:

8 h. 45 min.

From Copenhagen to Beijing: 7,723 km.



We hope that we have encouraged you to participate in the
WFD Camp for Deaf Children!

We wish you all the best luck!

Danish Deaf Youth Association, October 2005

See you in Denmark



DANSKE DØVES UNGDOMSFORBUND